

WIRING ILLUMINATOR WEB™



DATA RENAISSANCE SUITE
WIRING ILLUMINATOR WEB™

Data Renaissance Suite™ (DRS) is a comprehensive suite of commercial software tools that significantly lower maintenance costs for complex critical equipment. The DRS tools were developed to support the stringent maintenance requirements of critical systems such as the United States Navy's F/A-18 aircraft. The tools are ideally suited for the maintenance challenges of the aerospace, heavy equipment, chemical, nuclear, and transportation industries.

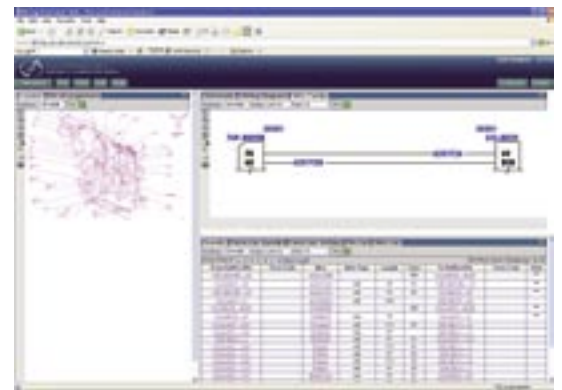
Wiring Illuminator Web™, a key component of DRS, is a computerized wiring data system that reduces the time, effort and associated cost of troubleshooting complex wiring. Wiring Illuminator Web™ captures a wide variety of information from wiring diagrams and wiring repair manuals, and provides a single integrated source of wiring data that is displayed on a computer. Wiring Illuminator Web™ and its component technologies currently support the wiring troubleshooting needs of a number of major systems, including commercial aircraft, the F/A-18 C/D and E/F fighter aircraft and the Apache Longbow helicopter. Wiring Illuminator Web™ is adaptable to accommodate technical data support requirements for commercial, non-military equipment as well.

WIRING ILLUMINATOR WEB™ FEATURES

- Dynamic display of a wide variety of wiring data
- Data filtered by equipment configuration
- Configurable screen elements
- XML DTD for import of legacy data
- Print Preview and Print capabilities
- Online Help function
- Support for MS Windows 98, NT, 2000 and XP operating systems; IE 5.X, 6.X browser; Oracle, MS Access, MS SQL Server, and Sybase databases.

Dynamic Data Display - Wiring Illuminator Web™ dynamically displays wiring information that is filtered by configuration - the technician sees only the wiring data that is applicable to the specific unit that is being worked on. This is a significant improvement over paper-based systems that show wiring data for multiple possible configurations, and leave it up to the technician to decipher notes and annotations on the drawings to determine which wiring is correct for the unit under test. Wiring diagrams are generated "on-the-fly" from a database to ensure that technicians always have access to high-quality, up-to-date, legible diagrams. Wiring Illuminator is a vast improvement over paper or scanned diagrams, which are often hard to read and may deteriorate over time.

Intelligent Graphics - Intelligent Graphics are interactive schematics or wiring diagrams created by CDG by mining information from your static wiring diagrams to produce intelligent vector graphics linked to the wiring database. Circuit tracing is provided, such that clicking on a wire or other component in the graphic causes its entire signal path to be visually highlighted. Active components, such as switches and circuit breakers, operate just like the physical components they represent. Selecting a wire, or other component in the intelligent graphic also causes other data views in Wiring Illuminator Web™ to reflect this selection.



Interface to External Systems - Wiring Illuminator Web™ includes a flexible external interface capability that supports integrations with other systems in the maintenance environment. For example, Wiring Illuminator Web™ can be launched from an Interactive Electronic Technical Manual (IETM), or it can obtain configuration information from a centralized maintenance management system.

Wiring data is formatted and displayed by Wiring Illuminator Web™ in a set of data “views.” The user selects which views are displayed, and controls the layout of the views on the screen. All views are correlated so that selecting a new focus in any of the views causes all other views to be updated appropriately. For example, clicking on a connector in the “Wire Diagram” view will cause all of the other views to be updated to reflect the wiring that is attached to the connector. The data views that can be provided by Wiring Illuminator include:

Wiring Diagrams and Schematics - Wiring diagrams generated “on-the-fly” for display of circuits and wire runs

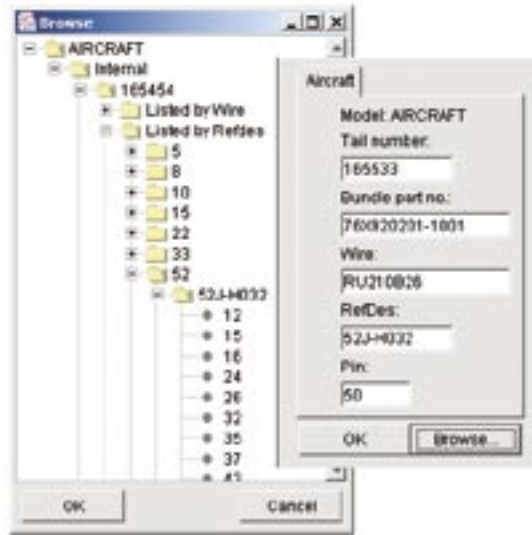
Intelligent Graphics - Interactive, behavior-enriched wiring diagram or functional schematic

Wire List - Tabular list detailing every connector pin and wire in the current circuit or wire run

Bundle - Tabular list detailing all wires in the current bundle (harness)

Parts List - Tabular list of all parts for the current connector or wire bundle

Pin List - Tabular list detailing all pins and connecting wires for the current connector



Locator - Graphic of the location of the current connector on the equipment under test

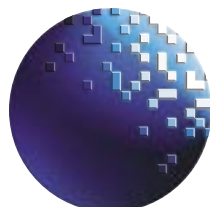
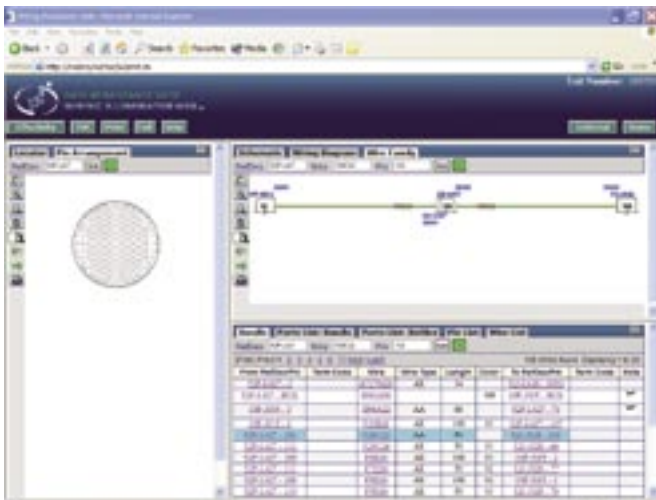
Pin Arrangement - Graphic of the pin arrangement of the current connector

Equipment Configuration - List of equipment modifications and optional equipment. User selects those that are applicable to the unit of equipment under test.

Database views can also be customized if necessary to accommodate customer requirements.

Wiring Illuminator Web's™ easy to use search form and hierarchical navigation control enables users to quickly search and browse for wiring data. With Wiring Illuminator Web™, tedious page flipping and searching across multiple wiring manuals and schematic foldouts can become a thing of the past.

www.ietm.biz
DRSSales@cdgnow.com



CDG CONTINENTAL
DATAGRAPHS
 a Boeing Company

www.cdgnow.com

15400 SE 30th Place, Suite 100, Bellevue, WA 98007 phone: (425) 456-0500 fax: (425) 691-2697 email: sales@cdgnow.com

© Continental DataGraphics